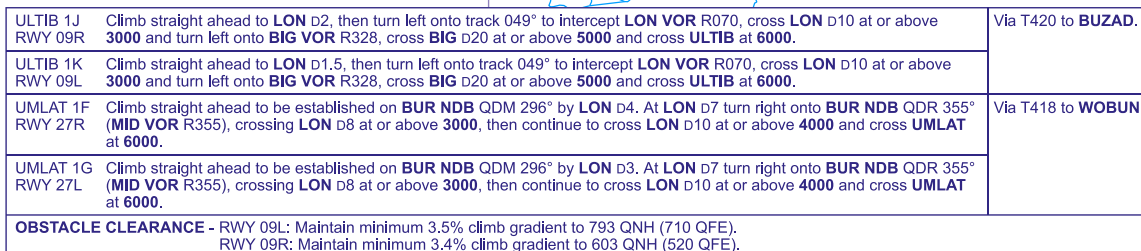


LONDON HEATHROW
RWY 09R/L RWY 27R/L
ULTIB 1J 1K UMLAT 1F 1G
(RNAV SUBSTITUTION ONLY)



- 1 Close in obstacles exist for departures from **all** runways. See Aerodrome Obstacle Chart and EGLL 2.10 Aerodrome Obstacles.
- 2 SIDs reflect Noise Preferential Routings. See EGLL AD 2.21 for Noise Abatement Procedures.
- 3 Cross Noise Monitoring Points not below 1083 QNH (1000 QFE) thereafter maintain minimum 4% climb gradient to 4000 to comply with Noise Abatement requirements. (Note: Climb gradients in excess of 3.4% are necessary for ATM purposes.)
- 4 Callsign for RTF frequency used **when instructed** after take-off 'London Control'. Report **callsign**, **SID designator**, **current altitude** and **cleared altitude** on first contact with 'London Control'.
- 5 Maximum 250KIAS below FL100 unless otherwise authorised.
- 6 Aircraft operators who are unable to conform to the published climb gradients/SID altitudes are required to inform Heathrow Delivery prior to pushback.
- 7 For UMLAT 1F 1G RCF procedures see AD 2.22 6.